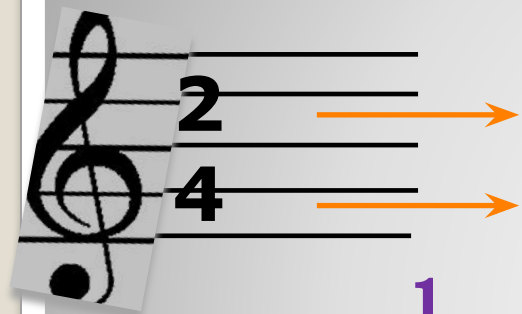


Размер

– выражение метра определенными длительностями



количество долей в такте

какая длительность идет на одну долю

Musical notation on a staff with a treble clef. The time signature is 2/4. The first measure contains two quarter notes, with the first one marked with a purple '1' and the second with a purple '2'. The second measure contains a half note, marked with a purple '1'. The third measure contains a quarter note marked with a purple '2' and a quarter rest marked with a purple '1'. The fourth measure contains a quarter note marked with a purple '2' and a half note marked with a purple '1'. An orange bracket underlines the first two measures, and another orange bracket underlines the last two measures. A green arrow points to the first note with the text 'ударная первая доля'. The word 'такт' is written below the brackets.

Метр, в котором акцент приходится через одну долю называется **ДВУХДОЛЬНЫМ**. Через две доли – **ТРЕХДОЛЬНЫМ**.